



Junction Box Format*

- Promotes animal welfare
- Newest and most advanced lighting technology
- Junglite Green™ spectrum replicates natural habitat
- Advanced 10W LED system specialized for poultry
- Durable, Built For Your Barn® design
- Improves feed conversion
- Enhances productivity



Base Unit
Format**



Edison Base
Format



Hard Wire
Format



Jelly Jar
Format

*Product shown with recommended junction box
**Compatible with AgriShift® STC/STA Stringer



AgriShift® lighting systems “shift” spectrum and intensity, meeting the individual needs of your animals†.



Junglite Green™ technology offers an enhanced jungle green spectrum, replicating a birds’ natural habitat and promoting growth.



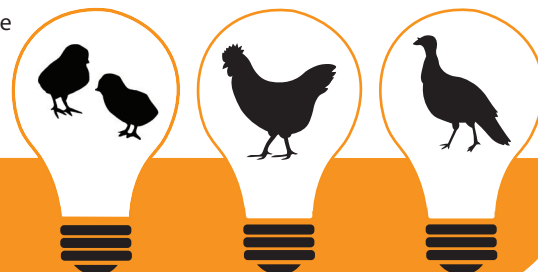
A Built For Your Barn® design uses techniques and materials that withstand harsh barn environments for years to come.

Animal-Centric Lighting Systems

The AgriShift® MLM-G is designed with Junglite Green™ technology, the most advanced agricultural lighting solution on the market today. There are no other products available designed specifically to replicate a birds’ natural habitat with a jungle green light like this technology does. It provides an optimized color spectrum with full dimming capability, essential for healthy bird growth and sexual development.

The Science Behind the Technology

The AgriShift® MLM-G stimulates a birds’ highest color sensitivity to meet developmental needs at all stages of growth. The added red content regulates circadian rhythms, improving animal welfare. Research has consistently concluded that broilers reared under monochromatic green light during the early growth stages experienced greater proliferation of the skeletal satellite cells, a primary muscle regenerator.



AgriShift® MLM-G Specifications

Nominal Power	10W (at full intensity)
Luminous Flux	725 lm human photopic 1183 lm poultry photopic
Input Voltage	120 VAC / 50/60 Hz
Beam Angle	200°
Light Output Equivalence	Up to 60W incandescent
Spectral Output	Species-specific greenenhanced white, w/ added red
Operating Temperature	-20°C to 40°C / -4°F to 104°F
Dimmable Range	100% to 5%, dims -to-green - white moonlight
Dimmer Type	Phase Modulation or Amplitude Control*
Environmental Ratings	Suitable for indoor corrosive environments per UL50E Salt Spray Test (BU, JB, JJ, HW), Suitable for damp locations, RoHS Compliant
Safety	Conforms to ANSI/UL STD 1598 (BU, JB, JJ, HW), Certified to Can/CSA STD. C22.2 NO. 250.0 (BU, JB, JJ, HW), Certified to CAN/CSA STD C22.2 NO. 1993 (EB), Conforms to ANSI/UL STD. 1993 (EB)

*For optimum dimming performance use AgriShift® Controllers

**Includes (4) stainless steel screws

Ordering Information

AgriShift® MLM-G

Base Unit (BU)

Edison Base (EB)

Jelly Jar (JJ)

Includes JJ adaptor/connector kit

Junction Box (JB)

Includes JB adaptor/connector kit

Hard Wire (HW)

SKU

MLM-FSWG-BU-180T-010-120

MLM-FSWG-EB-180T-010-120

MLM-FSWG-JJ-180T-010-120

MLM-FSWG-JB-180T-010-120

MLM-FSWG-HW-180T-010-120

AgriShift® MLM-G Accessories

AgriShift® Master Controller 120V

AgriShift® Slave Dimmer 120V

AgriShift® Master Controller 240V-50Hz

AgriShift® Master Controller 240V-60Hz

Junction Box

Five ¾" threaded outlets

Junction Box

Five total ¾" KO hubs, four sealed

AgriShift® STC, Stringer Connector

~24½ m OAL, 2.43 m sections

AgriShift® STC, Stringer Connector

~30½ m OAL, 3 m sections

AgriShift® STA, Stringer Adaptor, 30 cm OAL

AgriShift® STA, Stringer Adaptor, 1 m OAL

AgriShift® STA, Stringer Adaptor, 2 m OAL

AgriShift® STA, Stringer Adaptor, 3 m OAL

Starter Cable, 4 ft OAL

Male connector on one end

SKU

30-014-00188-L123

30-014-00189-L123

30-014-00180-L123

30-014-00180-L123-60Hz

PRB57550GY

PRB575GYKO

STC-0183-10-080

STC-0184-10-100

STA-0197-3-012

STA-0189-3-039

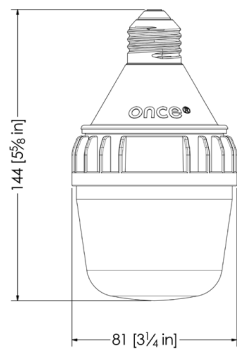
STA-0190-3-079

STA-0191-3-118

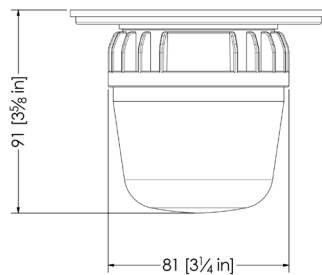
STAR-0198-3-004

AgriShift® MLM-G Mechanical Dimensions

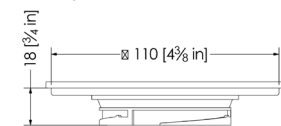
Edison Base (EB)



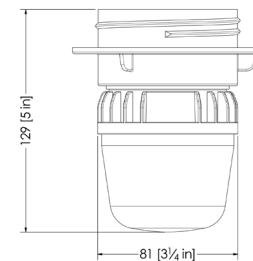
Junction Box (JB)



JB Adaptor Kit**



Jelly Jar (JJ)



JJ Adaptor Kit**

