



# ANIMAL-CENTRIC LIGHTING SYSTEMS

## SILOX-PRO Tube Light, Junglite Green



- *Improve animal welfare with natural sunrise/sunset simulation*
- *Calm flock and improve feed conversion rates with species-specific Junglite Green technology*
- *Durable and quality tube light solution*

## Introduce your animals to species-specific lighting

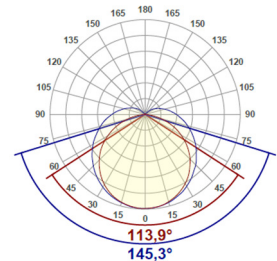
Designed to influence desirable physiological and biological processes in animals, the SILOX-PRO Tube Light with Junglite Green technology features a species-specific spectrum to improve both your return on investment and the animals' wellbeing.

The SILOX-PRO Junglite Green Tube Light offers total dimmability, high efficiency, energy savings, maximum durability, uniform light distribution and more. Pair with any of our ITF enclosures for a high protection grade (IP67), waterproof solution.

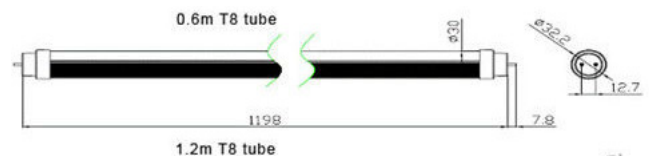


Junglite Green™ technology offers an enhanced jungle green light spectrum, replicating a birds' natural habitat and promoting growth.

### Beam Spread



### Dimensions



Visit our website for more information: [www.once.lighting](http://www.once.lighting)

# Specifications and Ordering

## SILOX-PRO Tube Light, Junglite Green Specifications

Nominal power	22W
Luminous flux - human photopic	2278lm
Luminous flux - poultry photopic	3367lm
Luminous Flux Melonopic	-
Initial LED luminaire efficacy	116 lm/W
Input voltage	230V
Input frequency	50/60 Hz
Driver included	No
Surge Protection	-
Inrush current	8A
Inrush time	300µs
Power consumption tolerance	+/- 5%
Power factor	0.86
Beam angle	114°
Beam spread	160°
Warranty period	3 Years
HS code	85395000
Country of origin	Federal Republic of Germany

## Spectral Output and Dimming Specifications

Dimmable	Yes
Dimmable range	100% to 0%
Spectral Output	Green/blue + red

## Operating and Mechanical Specifications

Operating temperature	-10°C – 40°C / 14°F - 104°F
Rated Life	>50,000 hours
Lens material	PC/PMMA
Housing material	Aluminium + PC
Diameter	25mm / 1 in (T8)
Height	-
Length	1200mm / 4 ft
Width	-
Mount / Adaptor	G13 rotatable base
Connection	Based on enclosure
Control interface	EPU-1500 Controller

## Safety and Certifications

CE Mark	Yes
RoHS Compliant	Yes
ANSI/UL	-
Can/CSA STD C22.2 NO 250.0	-
UL50E	-
ESC	-
ENEC	-
CB	-
SASO (Saudi Arabia)	-
NOM (Mexico)	-
CCC (China)	-
ANATEL (Brazil)	-
Flammability mark	-
IEC protection class	Class 2
IK impact rating	Based on enclosure
IP Code	Based on enclosure

## Ordering Information

SILOX-PRO Tube Light, Junglite Green | 929002100299

Our Junglite Green technology targets poultry-specific color sensitivities to benefit all growth stages.



### Contact us

#### or learn more at:

[www.once.lighting](http://www.once.lighting)

Am Südfeld 7

49377 Vechta

Germany

P +49 (0) 4441-8898-10

[info.germany@onceteam.com](mailto:info.germany@onceteam.com)

15255 23rd Ave. N.

Plymouth, MN 55447

United States of America

P +1 (763) 381-5621

[info@onceteam.com](mailto:info@onceteam.com)

Wloclawska 167

87-100 Tourn

Poland

P +48 (56) 699-5330

[info.poland@onceteam.com](mailto:info.poland@onceteam.com)

**once®**

© 2020 Signify Holding. All rights reserved. The information provided herein is subject to change, without notice. Signify does not give any representation or warranty as to the accuracy or completeness of the information included herein and shall not be liable for any action in reliance thereon. The information presented in this document is not intended as any commercial offer and does not form part of any quotation or contract, unless otherwise agreed by Signify.

Revised 06 /2020 Data subject to change