



# ANIMAL-CENTRIC LIGHTING SYSTEMS

## IXOS-PRO LED, Junglite Green



- Durable and quality lighting solution
- Improve animal welfare with natural sunrise / sunset capabilities
- Promotes growth for your flock

Product shown with recommended IUL base fixture (sold separately)

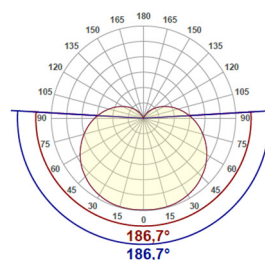
## Introduce your animals to species-specific lighting

Improve both the return on your investment and your animals' wellbeing with the species-specific technologies featured in our IXOS-PRO LED, Junglite Green lighting fixture. It provides uniform light distribution, full dimming and programming capabilities, high efficiency, energy savings, optimal durability and more.

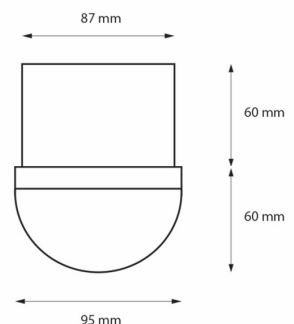


Junglite Green™ technology offers an enhanced jungle green light spectrum, replicating a birds' natural habitat and promoting growth.

### Beam Spread



### Dimensions



Visit our website for more information: [www.once.lighting](http://www.once.lighting)

# Specifications and Ordering

## IXOS-PRO LED, Junglite Green Specifications

Nominal power	12.5W
Luminous flux - human photopic	1350lm (5000k)
Luminous flux - poultry photopic	1526lm
Luminous Flux Melonopic	-
Initial LED luminaire efficacy	103 lm/W
Input voltage	230V
Input frequency	50/60 Hz
Driver included	No
Surge Protection	Yes - via power unit
Inrush current	3A
Inrush time	300µs
Power consumption tolerance	+/- 5%
Power factor	0.85
Beam angle	183°
Beam spread	280°
Warranty period	3 Years
HS code	85395000
Country of origin	Republic of Poland

## Spectral Output and Dimming Specifications

Dimmable	Yes
Dimmable range	100% to 0%
Spectral Output	Green/blue + red

## Operating and Mechanical Specifications

Operating temperature	-10°C – 40°C / 14°F - 104°F
Rated Life	>50,000 hours.
Lens material	PC
Housing material	PC
Diameter	95mm
Height	-
Length	60mm lamp only 120mm lamp / fixture
Width	-
Mount / Adaptor	IUL base
Connection	3 conductor flexible cable
Control interface	EPU-1500 Dimmer TKC-300 dimmer

## Safety and Certifications

CE Mark	Yes
RoHS Compliant	Yes
ANSI/UL	-
Can/CSA STD C22.2 NO 250.0	-
UL50E	-
ESĈ	-
SASO (Saudi Arabia)	-
NOM (Mexico)	-
CCC (China)	-
ANATEL (Brazil)	-
Flammability mark	-
IEC protection class	Class 1
IK impact rating	IK07
IP Code	IP68

## Ordering Information

IXOS-PRO LED, Junglite Green	929002100295
IUL fixture base	929002100292

Note: EPU-1500 or TKC-300 are required to use all features of the product.

Our Junglite Green technology targets poultry-specific color sensitivities to benefit all growth stages.



### Contact us

### or learn more at:

[www.once.lighting](http://www.once.lighting)

Am Südfeld 7

49377 Vechta

Germany

P +49 (0) 4441-8898-10

[info.germany@onceteam.com](mailto:info.germany@onceteam.com)

15255 23rd Ave. N.

Plymouth, MN 55447

United States of America

P +1 (763) 381-5621

[info@onceteam.com](mailto:info@onceteam.com)

Wloclawska 167

87-100 Tourn

Poland

P +48 (56) 699-5330

[info.poland@onceteam.com](mailto:info.poland@onceteam.com)



© 2020 Signify Holding. All rights reserved. The information provided herein is subject to change, without notice. Signify does not give any representation or warranty as to the accuracy or completeness of the information included herein and shall not be liable for any action in reliance thereon. The information presented in this document is not intended as any commercial offer and does not form part of any quotation or contract, unless otherwise agreed by Signify.

Revised 06 /2020 Data subject to change